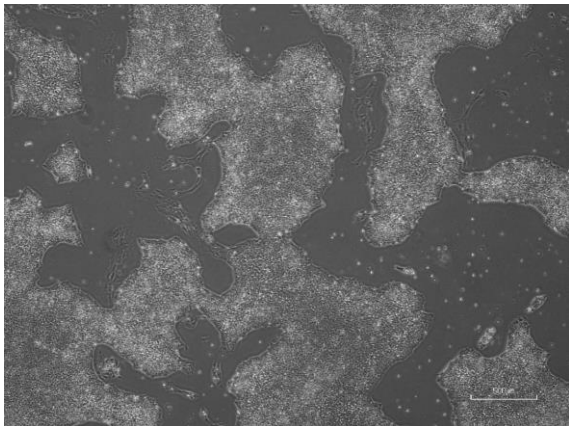
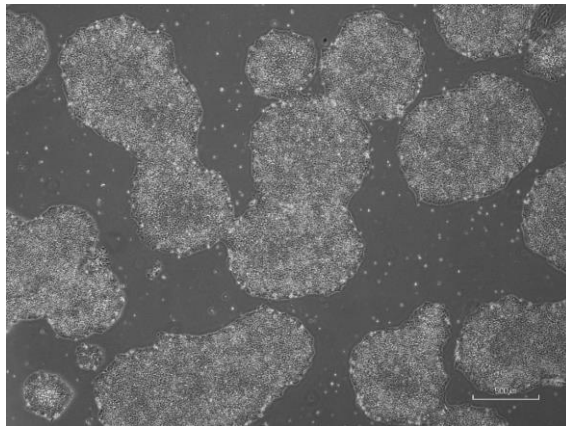


【 CiRA-jk-0056 】 Morphology of iPSC colonies

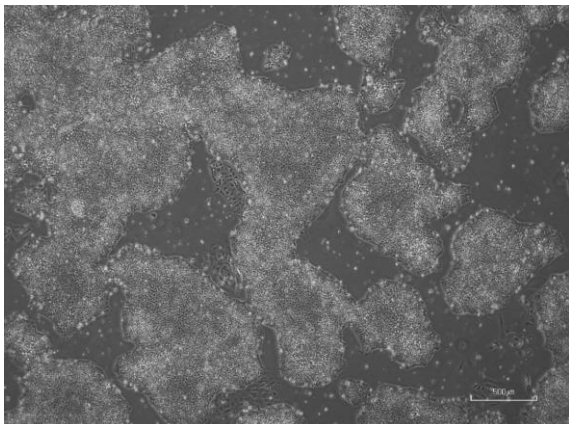
CiRA -jk-0056-A: passage-2



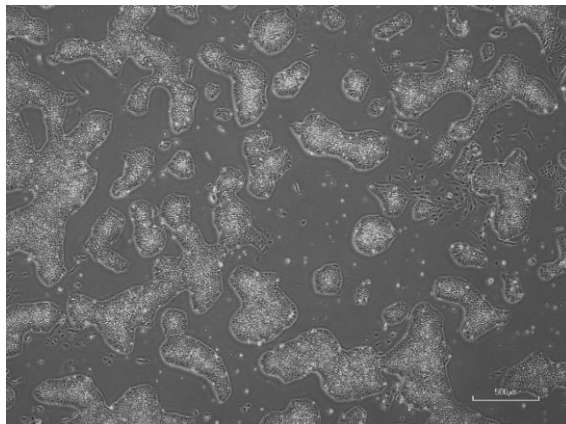
CiRA -jk-0056-B: passage-2



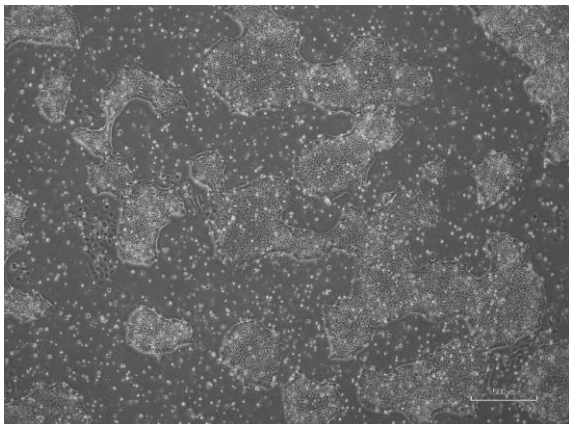
CiRA -jk-0056-C: passage-2



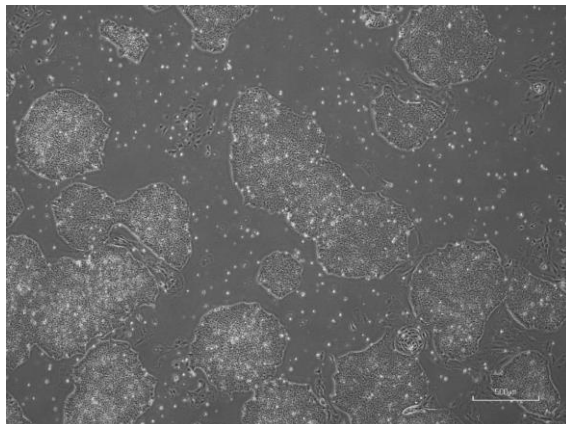
CiRA -jk-0056-D: passage-2



CiRA -jk-0056-E: passage-2



CiRA -jk-0056-F: passage-2



(All images were captured at 4x magnification)